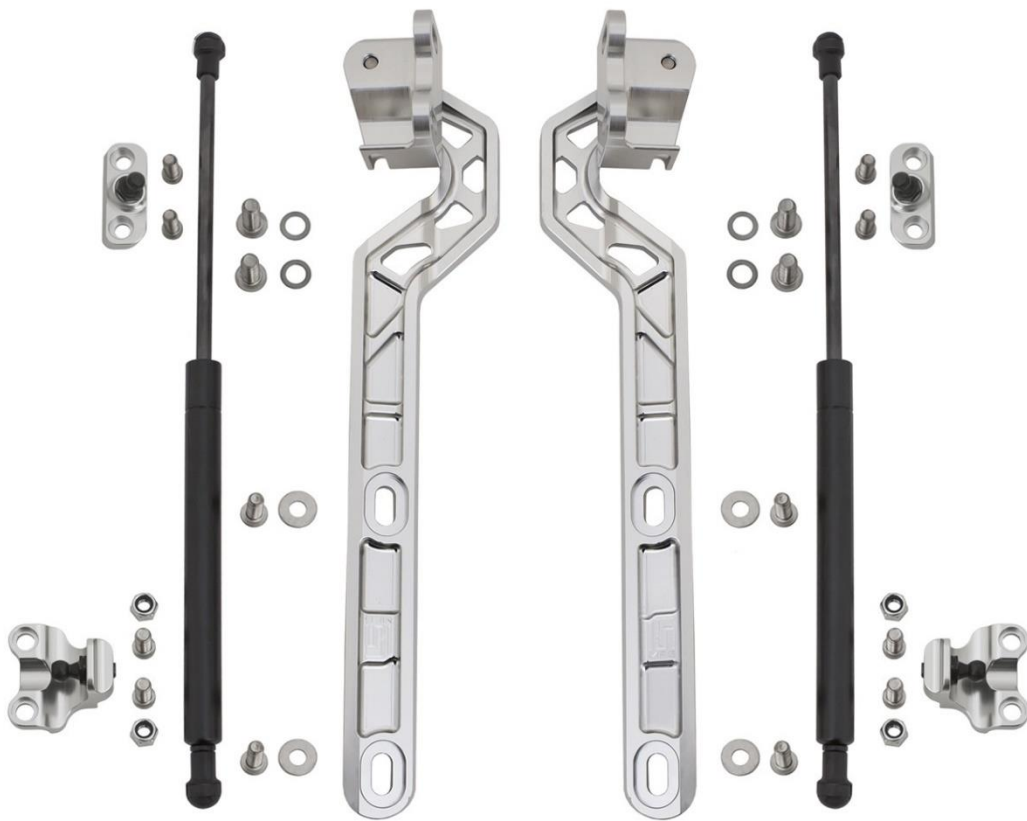




81+ C10 Billet Hood Hinge Kit

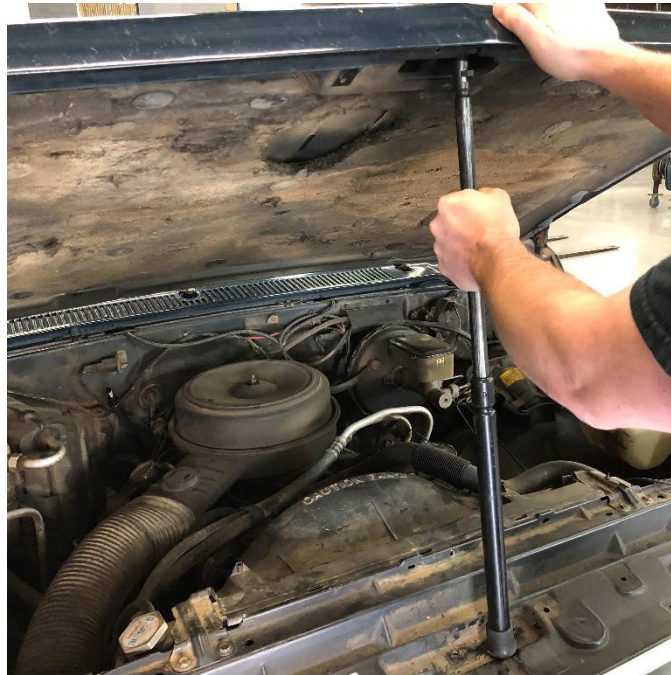


Fitment

- **81-91 GM C10/K10, C20/K20, C30/K30, Pickups and SUVs**

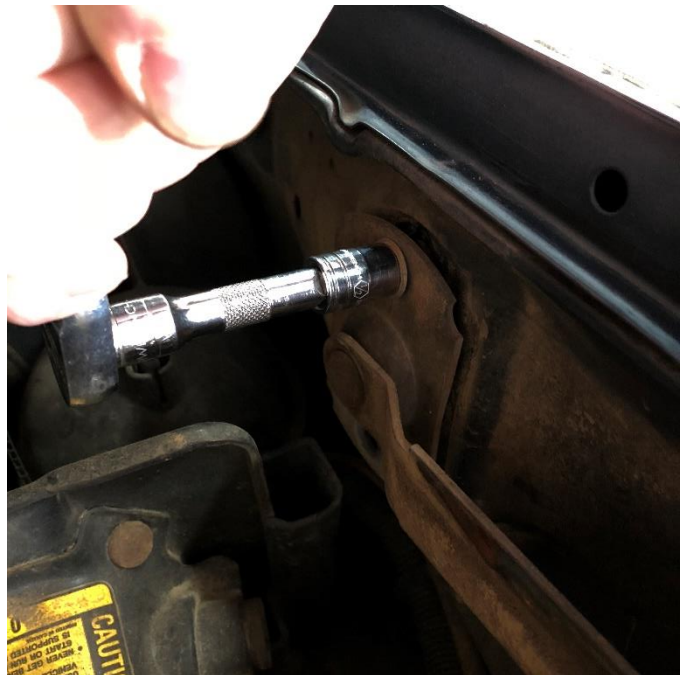
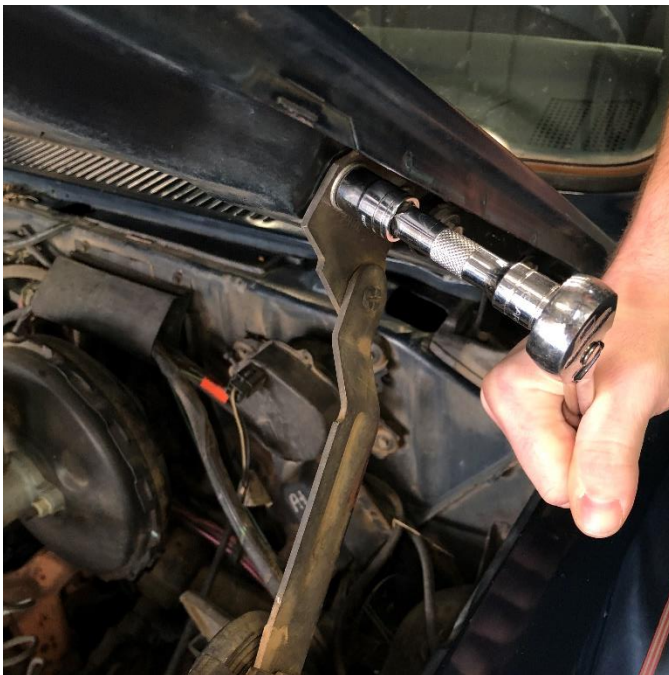
Installation Notes

- Installation of this kit will require more than 1 person. It is suggested to have a 3rd person on stand-by for the removal and installation of the hood.
- Be cautious when removing and installing the hood to not damage the paint, especially around the edges of the hood, fenders, and cowl.
- 4B5175RH (72 lb) struts are included. SG371005 (54 lb) struts can be used for lightweight hoods such as fiberglass units. SG359019 (112 lb) struts can be used for heavier hoods such as those with sheetmetal modifications.



This installation refers to the driver side. All steps are to be repeated on the passenger side in kind. You will want to begin by propping the hood up in a position to where you can easily access the factory hinge assemblies.

2 & 3

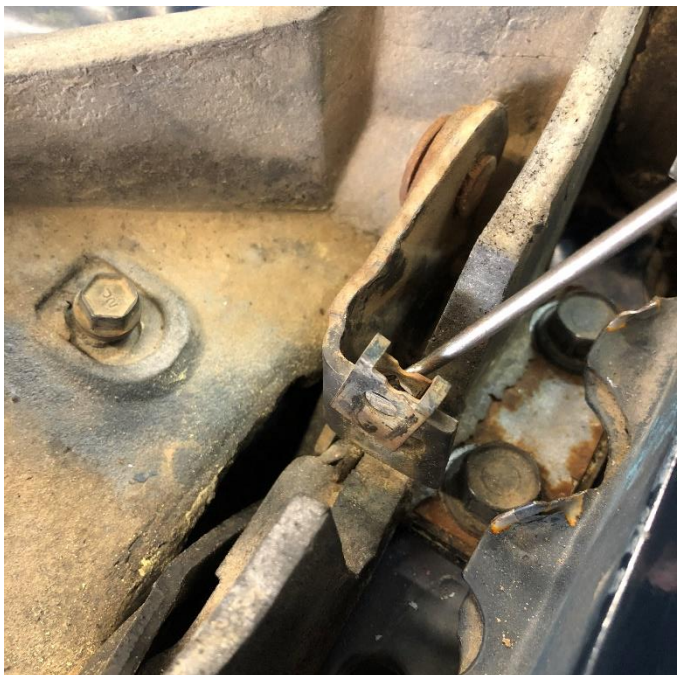
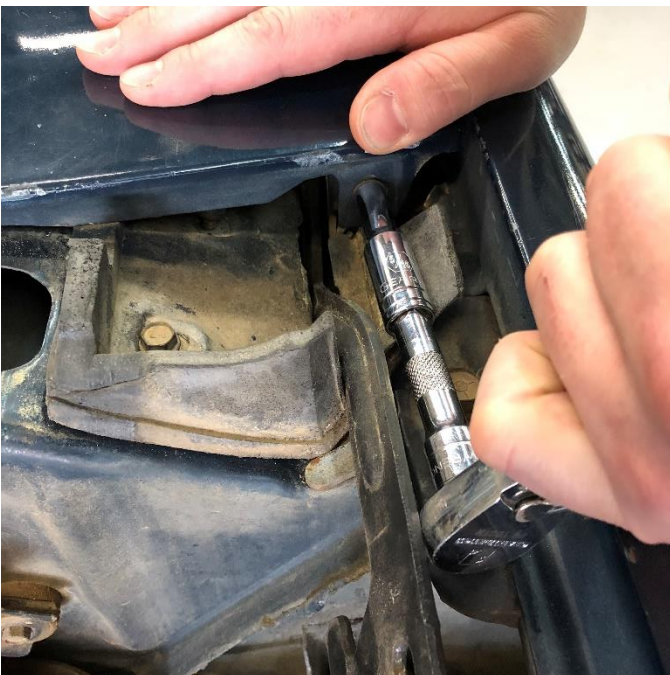


Remove the hood spring from the hood and the fender.

****For strut only kits, disregard the following steps 4 -16. Resume installation at step 17****



Remove the hood from the hinges. Be careful not to drop the hood damaging the cowl panel or fenders. Remove the wiper arms. The retainer, shown in step 5, will be pulled away from the stud allowing the arms to come off. You will need to apply upwards and downwards pressure to adjust the angle of the assembly to allow it to come off straight. Do not force it off at angle, it can damage the stud causing you to not be able to properly reinstall the wipers.



There are 4 screws along the front edge that will allow you to remove the cowl panel. Then remove the 2 outer clips from the hinge. **Do not discard the clips. They will be used on the new hinge.**



Remove the 4 bolts attaching the hinge to the cowl. These will no longer be used.



Using the 3/8 bolts and washers provided, attach the new hinge assembly to the cowl. Do not tighten them all the way down at this time. Allow a little wiggle room for the hinge to be adjusted from side to side. Install the original clips used to attach the cowl panel onto the hinge.



Using the 5/16 bolts and washers provided, install the hood on to the hinge arm. Slowly lower the hood down to the closed position. Be careful not to damage the edges of the hood and fender. You can apply tape the edges as an extra precaution. Adjust the hood from side to side until you achieve an even gap on both sides. Due to the cowl panel not being able to be installed with the hood on the truck, it is not entirely necessary to adjust the hood from front to rear at this time. Once you have the hood centered, tighten the 4 bolts attaching the hinge to the cowl.



We recommend removing the hood from the truck before reinstalling the cowl panel. Reinstall the cowl panel with the original hardware and then reinstall the wiper arms. Once the cowl panel is on, you can now install the hood for the final time. Make the necessary adjustments to align the hood from front to rear and tighten the arms into position. Once the hood is aligned and secure, prop the hood into the open position.



If the truck has the factory washer reservoir installed, you will need to remove it at this time.
Remove the rear rubber bump stops from the fender.



Measuring from the center of the rear fender bolt to the center of the ball stud, you will need to clamp the lower strut mount into position. Using some tape between the clamp and aluminum will help protect the aluminum from being damaged. To achieve different open heights, you can use the following measurements:

For Maximum Height (closest to stock): 20.5 Inches.

For Minimum Height (lowest opening to still have access to engine bay): 22 inches

Recommended height: 20.75 Inches



Once you have the mount clamped into the correct position, use a 5/16 bit to drill the holes for the fasteners. Use a 5/16 screws and nyloc nut to fasten the mount to the fender after the first hole is drilled.



Once one side is tightened, remove the clamp and repeat drilling/fastening on the other side.



The strut will need to be attached to the upper mount prior to fastening it to the hood. Using the 5/16 screws provided, fasten the upper mount to the hood as shown.



Once the upper mount is attached to the hood, you can then attach the strut to the lower mount. Remove the hood prop and slowly lower the hood. Keep an eye on the strut to make sure it compresses properly and does not run out of travel. Also check to ensure the strut isn't rubbing painted surfaces of the hood or fender. If it does, the strut mounting studs can be shimmed out by using 5/16 washers.



You have successfully installed your C10 Billet Hood Hinges. Be sure to show us your install by sharing with us on Facebook or Instagram. @littleshopmfg #littleshopmfg

For any questions or suggestions please [CONTACT US](#)

